

The TYMPANO simulator is designed for training in otoscopic examination of the eardrum\*

## Composition of the set «OSCE» :

**1** Articulated arm consisting of 3 parts

Suction cup

Arm

Ball bracket



**1** Anatomical ear model



**2** Anatomical cochlea plugs



**24** Eardrums  
3 sets of 8 eardrums, representative of the most common pathologies



\* Simulator supplied without otoscope



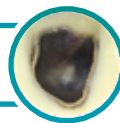
## TYPES OF EARDRUMS AVAILABLE IN THIS SET

Eardrum  
N° Pathology

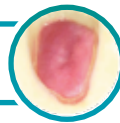
**0** Normal eardrum\*



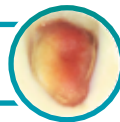
**5** Hemotympanum



**7** Acute otitis media (V1)



**10** Acute purulent otitis media with visible pus



**13** Otitis media with effusion and retro-tympanic bubbles (v1)



**17** Otitis media with effusion without retro-tympanic bubbles



**21** Inferior perforation with myringosclerosis



**29** Tympanostomy tube (Shepard)



Level of difficulty :



\* Possibility of performing a paracentesis on the normal eardrum cartridge